

Accusetter Meter Kit Model 300.4



Instructions

1. Hang the meter by its support cable so that the dial face is level.

2. Close valves (1) & (2). Open valve (5). Close valves (6) & (7).

3. Close valves on red & Yellow hoses. Connect high pressure fitting (8) to upstream orifice tap (Red hose) and connect low pressure fitting (9) to down stream orifice tap (Yellow hose) using rubber hoses provided. The hose valves should be located close to the venturi tap.

4. Open the hose valves and any valves on the venturi impulse lines.

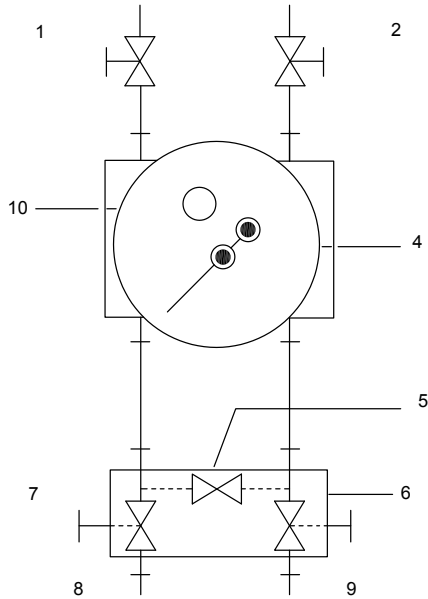
5. Open valves (6) & (7) and alternately crack valves (1) & (2) until all air has been expelled from the instrument & hoses. Close valves (1) & (2).

6. Open valves (6) & (7), slowly close by-pass valve (5) making sure the meter is not over-ranged. Read differential pressure.

7. The direct GPM reading plastic gauge faces can be used for Accusetters 2" and under. Make sure the plastic gauge face corresponds to the Model and size of the Accusetter being tested.

8. When through with the test, open valve, (5), and close hose valves. Remove hose from venturi. **DO NOT REMOVE HOSES FROM THE METER IF ANOTHER VENTURI IS TO BE MEASURED.**

9. The filled and purged meter & hoses can be used for another test without purging.



Maintenance

Normal operation requires no maintenance. In cases where dirt or scale builds up, flush the meter with clean water or compatible solvent.

Caution !

- Do not leave liquid in the meter below freezing temperatures.
- Care must be taken not to overpressure the meter.
- Secure and support the hoses to prevent sagging and/or vibration.