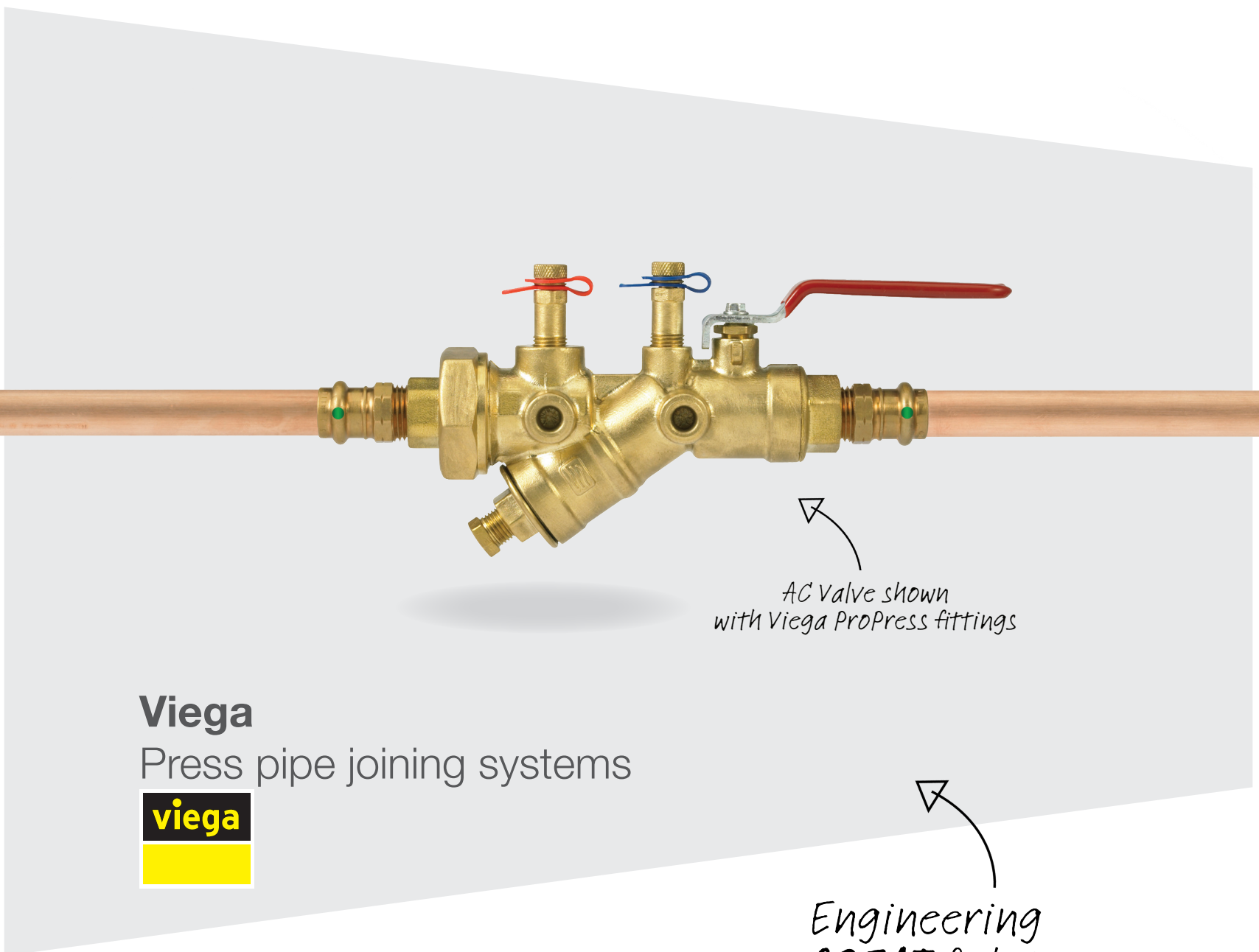


Viega ProPress®



AC Valve shown
with Viega ProPress fittings

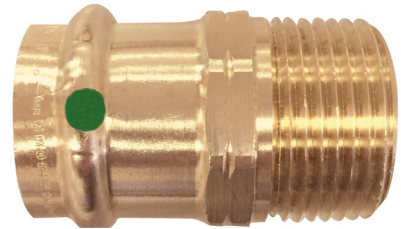
Viega
Press pipe joining systems



Engineering
GREAT Solutions

Viega ProPress

Viega ProPress is the original press pipe joining system. Pressing pipe connections saves time and labor compared to traditional soldering and Viega ProPress offers more features and benefits than any other imitation press system. Viega ProPress adapters combined with IMI Flow Design valves are suitable for any project whether in existing buildings, new construction or retrofit installations.



Key features

- > **Patent Viega Smart Connect® Feature**
Allows installers to easily identify unpressed connections.
- > **Versatile**
You can install Viega ProPress virtually anywhere in commercial, industrial and residential applications.
- > **Meets Codes and Standards**
Viega ProPress meets the most rigorous testing codes and standards in North America and is UPC, NSF-61, CSA, UL, and FM tested and approved.
- > **Fast and Easily Made**
½" to 2" press connections made in four to seven seconds.

Technical description

Application:

Heating and cooling systems

Dimensions:

½" - 2"

Pressure class:

600 psi

Temperature:

Max. working temperature: 250°F
Min. working temperature: 0°F

Material:

Body: Bronze

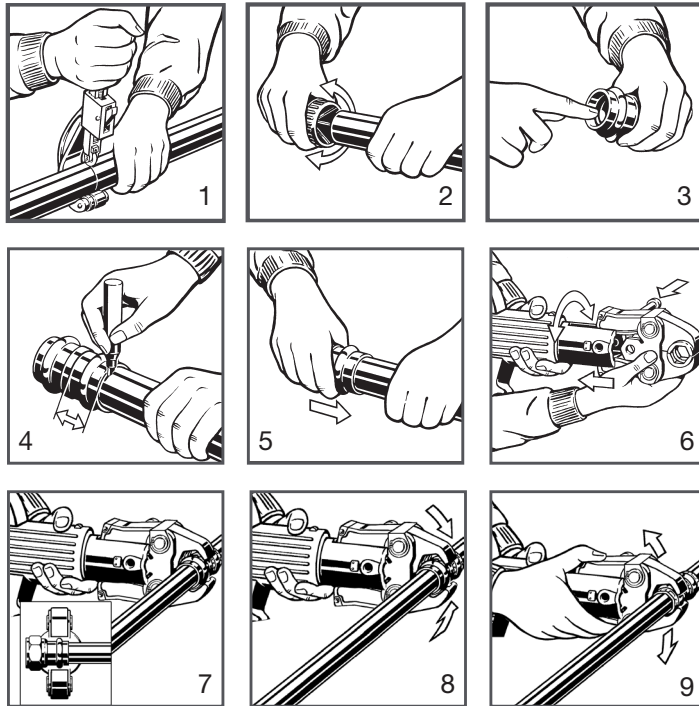
Marking:

Viega ProPress, Smart Connect

Instructions

Viega ProPress®

For Types K, L and M hard copper tubing in 1/2" to 2" and soft copper tubing 1/2" to 1 1/4".



Viega ProPress Insertion Depth Chart

| Tube Size | 1/2" | 3/4" | 1" | 1 1/4" | 1 1/2" | 2" |
|-----------------|------|------|------|--------|---------|---------|
| Insertion Depth | 3/4" | 7/8" | 7/8" | 1" | 1-7/16" | 1-9/16" |

WARNING! Read and understand all instructions for installing Viega ProPress fittings. Failure to follow all instructions may result in extensive property damage, serious injury or death.

1. Cut copper tubing at right angles using displacement-type cutter or fine-toothed steel saw.
2. Remove burr from inside and outside of tubing to prevent cutting sealing element.
3. Check seal for correct fit. Do not use oils or lubricants. Use only Viega ProPress Shiny Black EPDM or Dull Black FKM sealing elements.

Note: For applications requiring Viega ProPress with FKM sealing elements, remove the factory-installed EPDM sealing element and replace with FKM sealing element.

4. Mark proper insertion depth as indicated by the Viega ProPress Insertion Depth Chart. Improper insertion depth may result in improper seal.
5. While turning slightly, slide press fitting onto tubing to the marked depth.

Note: End of tubing must contact stop.

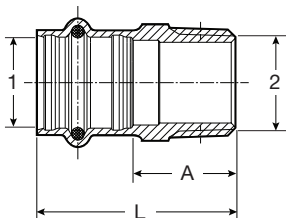
6. Insert appropriate Viega jaw into the pressing tool and push in, holding pin until it locks in place.
7. Open the jaw and place at right angles on the fitting. Visually check insertion depth using mark on tubing.
8. Start pressing process and hold the trigger until the jaw has engaged the fitting.
9. After pressing, the jaw can be opened again.

Leak Testing with Smart Connect®:



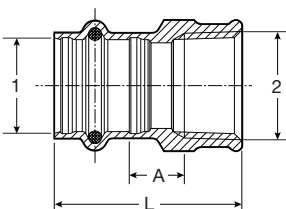
Unpressed connections are located by pressurizing the system with air or water. When testing with water the proper pressure range is 15 psi to 85 psi maximum. Leak testing with air can be dangerous at high pressures. When testing with compressed air the proper pressure range is 1/2 psi to 45 psi maximum. Following a successful leak test, the system may be pressure tested up to 200 psi with air, or up to 600 psi with water, if required by local code requirements or project specifications.

Articles



Viega ProPress Adapter Zero Lead Bronze P x MPT - Model 2911ZL

| Size 1 2 | A [in] | L [in] | lb | Article No. IMI Flow Design | Article No. Viega |
|-----------------|--------|--------|-------|--------------------------------|----------------------|
| 1/2" x 3/8" | 0.77 | 1.59 | 0.092 | 31F320 | 79210 |
| 1/2" x 1/2" | 0.89 | 1.71 | 0.108 | 31F321 | 79215 |
| 1/2" x 3/4" | 1.00 | 1.83 | 0.166 | 31F322 | 79220 |
| 3/4" x 1/2" | 1.02 | 1.93 | 0.146 | 31F323 | 79225 |
| 3/4" x 3/4" | 1.02 | 1.93 | 0.157 | 31F324 | 79230 |
| 3/4" x 1" | 1.18 | 2.09 | 0.233 | 31F325 | 79235 |
| 1" x 3/4" | 1.18 | 2.09 | 0.226 | 31F326 | 79240 |
| 1" x 1" | 1.26 | 2.17 | 0.255 | 31F327 | 79245 |
| 1" x 1 1/4" | 1.54 | 2.44 | 0.456 | 31F328 | 79250 |
| 1 1/4" x 1" | 1.22 | 2.24 | 0.324 | 31F330 | 79255 |
| 1 1/4" x 1 1/4" | 1.34 | 2.36 | 0.444 | 31F331 | 79260 |
| 1 1/4" x 1 1/2" | 1.48 | 2.50 | 0.567 | 31F332 | 79265 |
| 1 1/2" x 1 1/4" | 1.34 | 2.76 | 0.632 | 31F333 | 79270 |
| 1 1/2" x 1 1/2" | 1.28 | 2.70 | 0.549 | 31F334 | 79275 |
| 1 1/2" x 2" | 1.65 | 3.07 | 0.931 | 31F335 | 79280 |
| 2" x 1 1/2" | 1.54 | 3.11 | 0.830 | 31F336 | 79285 |
| 2" x 2" | 1.50 | 3.07 | 0.891 | 31F337 | 79290 |



Viega ProPress Adapter Zero Lead Bronze P x FPT - Model 2912ZL

| Size 1 2 | A [in] | L [in] | lb | Article No. IMI Flow Design | Article No. Viega |
|-------------|--------|--------|-------|--------------------------------|----------------------|
| 3/4" x 3/4" | 0.35 | 1.81 | 0.175 | 31F338 | 79315 |

Disclaimer:

This document is subject to updates. For the most current Viega technical literature please visit www.viega.us

For more information call 1.800.976.9819 or visit www.viega.us

